

TO REPLACE DRIVE RING

- 1) Remove splash pan.
- 2) Release upper case and place it upside down as fig. A shows.
- 3) Clean groove of ring holder with rags.
- 4) Insert new drive ring into the groove.
- 5) Push the drive ring into the groove till the last bent is snugly fitted into the groove, holding the part, arrow indicate.

Note: As fig. B shows, the angle of the groove and the ring is different, bend the drive ring slightly toward the arrow, and push it in.

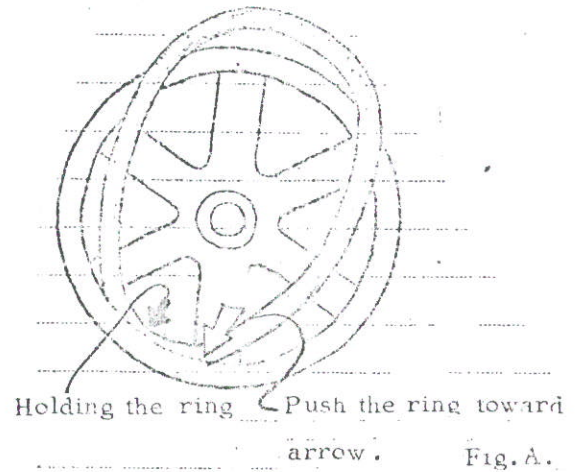


Fig. A.



As an arrow indicates, twist down the ring until angle difference disappear.

Catch the lower tip of groove with ring and twist the ring upward to fix it into the groove.

Once more twist down the ring to fix the lower part of the ring into the end of the groove.

IMPORTANT

When you first apply ring into the groove, you will see the angle difference between the ring and the groove. To adjust the angle and snugly fix the ring into the groove, follow these procedures with care.



Twist the ring upward to fix it into the end of the groove.

Repeat these procedures until the ring is snugly fixed into the groove.

Measure approx. 0.1" (2mm) between the shoulder of the ring and the surface of the groove all around the circumference.

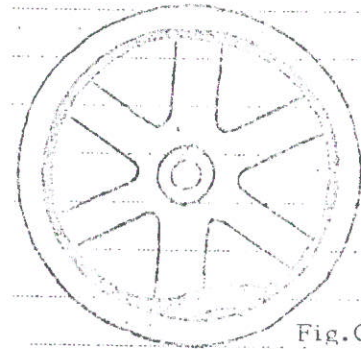


Fig. C.

To push the last bent into the groove, follow the above procedures: A - F

- 6) Clean the drive ring with no lead, regular gasoline.
- 7) Place the upper case as the speed indicate plate and lever are in the same vertical line. Fig. D.
- 8) Screw in 4-plus pan-head screws to fasten the cases.
- 9) Operate the wheel for about 5 minutes until the ring snugly fitted into the groove and the rattling sound and vibration disappear.

Speed indicate plate

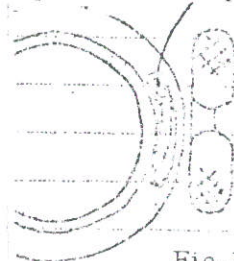


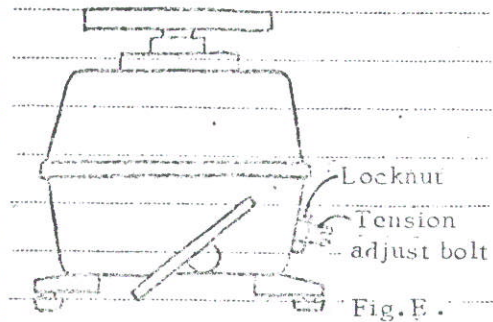
Fig. D.

-DRIVE RING REPLACEMENT IS OVER.-

TO LOWER CONTACTING PRESSURE

1

The new drive ring increases the contacting pressure between the drive ring and the drive cone. Please adjust for longer life and more smooth pedal/lever control as follows:



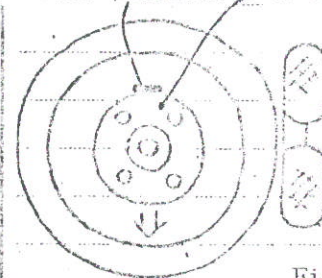
1. Loosen lock-nut.
2. Loosen the tension adjust bolt for 2 turns.
3. Tighten the lock-nut.

2

TO ADJUST B-HOLDER

1. Remove wheelhead.
2. Mark the position of the B-holder.
3. Loosen 4 b-holder fastening bolts.
4. Move the B-holder by 1.5 mm (0.06") to operator's side.
(Measure 1.5mm by the mark of the position, made in procedure 2 above.)
5. Tighten 4 B-holder fixing bolts.
6. Install the wheelhead.

Mark the position. B-holder

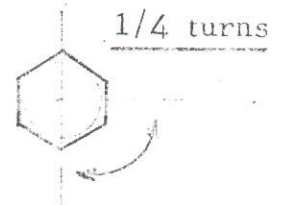
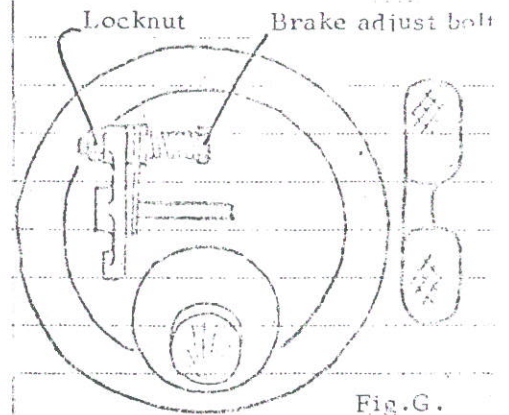


3

TO ADJUST SPEED CONTROL PEDAL/LEVER

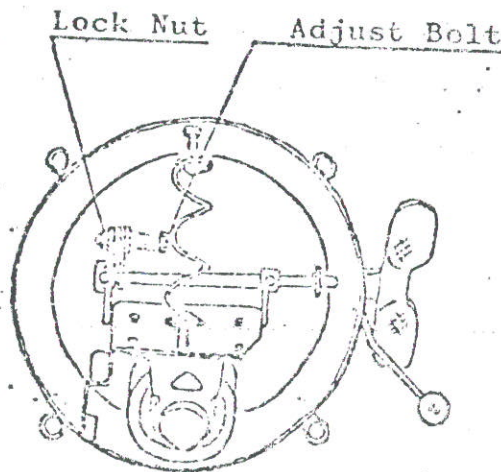
Contacting pressure is lowered in 1 and now the speed control pedal/lever should be adjusted for more smooth operation of speed pedal/lever.

1. Remove 4 plus-pan-head screws to free the upper and bottom case.
2. Loosen the lock-nut.
3. Loosen the brake adjust bolt by 1/4 turns.
4. Tighten the lock-nut.
5. Return the lever to the fully stop-position and check the lever itself does not move.
6. If the lever does not move, loosen the brake adjust bolt more 1/4 turns and adjust the moderately smooth lever tightness. Lever must not move by itself at any time.
7. Tighten the brake adjust bolt 1/4 turns for extended use.
8. Place upper case as the speed indicate plate and lever are in the same vertical line..
9. Screw in 4 plus pan-head screws to fasten the cases.



SPEED CONTROL LEVER ADJUSTMENT

The Speed Control Pedal/Lever may become loose with extended use. Please adjust as follows:



- 1) Open bodycase as shown in fig.
- 2) Loosen lock nut with provided wrench.
- 3) Tighten adjust bolt (turn it 1/4 turns toward clockwise direction). Grasp the tightness of the pedal. Try this until the right adjustment be done.
- 4) Tighten the lock nut.
- 5) Assembly the body case.

Note the speed indicate plate come in the vertical line of the speed control lever (pedal).