

Nidec

SHIMPO ASPIRE

Tabletop Potter's Wheels Troubleshooting Manual

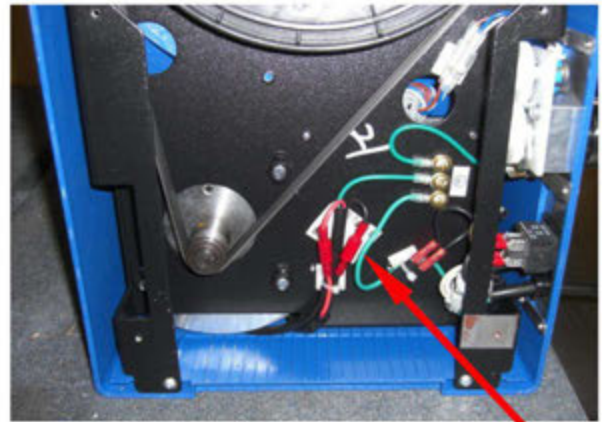


NIDEC-SHIMPO CORPORATION

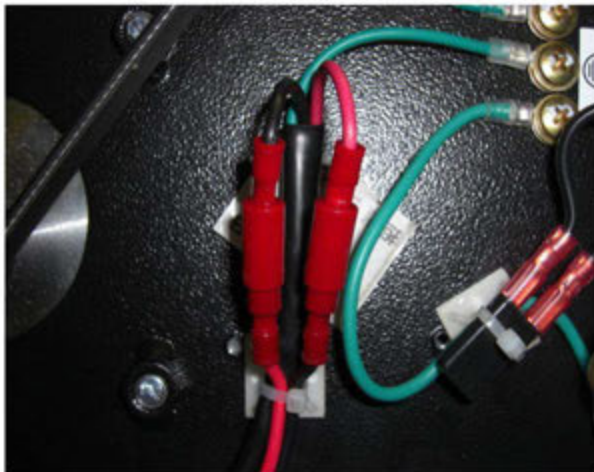
How To Reverse Wheel Head Direction (Aspire)



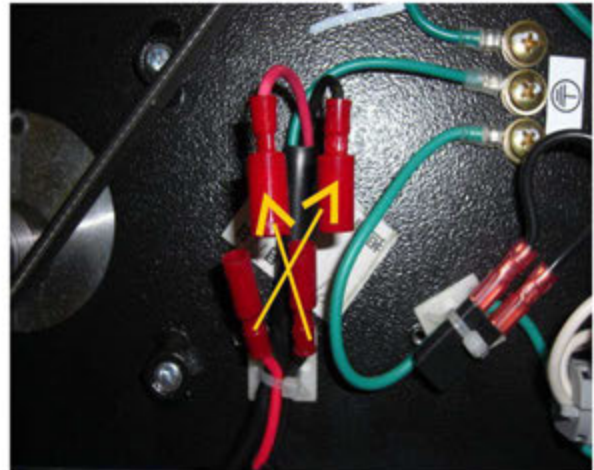
1. Remove the metal undercover by removing all rubber feet.



2. Locate the motor wire harness.



3. The motor harness has **BLACK**, **RED** and **GREEN** wires, that connect to the controller harness of **BLACK**, **RED**.



4. Switch the **BLACK** wire of the motor wire to connect the **RED** controller wire and **RED** motor wire to **BLACK** controller wire.

Wheelhead direction

Counter Clockwise = **BLACK** to **BLACK** **RED** to **RED**
Clockwise = **BLACK** to **RED** **RED** to **BLACK**

How to Convert Your Aspire Wheel from the Speed Lever Version to the Foot Pedal Version



Tools Required

1. Philips Screw Driver
2. 3/32" Allen Wrench
3. 19 mm box Wrench



Foot Pedal Conversion Kit:

1. Foot Pedal Assembly
2. Strain relief
3. Strain relief nut
4. Metal Washer
5. (2) zip ties

Make Sure Your Wheel is Unplugged Before Starting any repairs!

Part# FPK-ASPIRE
Foot Pedal Conversion kit



1. Remove the metal undercover by unscrewing all 6 rubber feet.



2. Using a 3/32" Allen wrench, loosen the set screw of the hand lever base then remove.



3. Unscrew the hand lever potentiometer from the switch panel.



4. Cut the zip tie binding the potentiometer wires together.



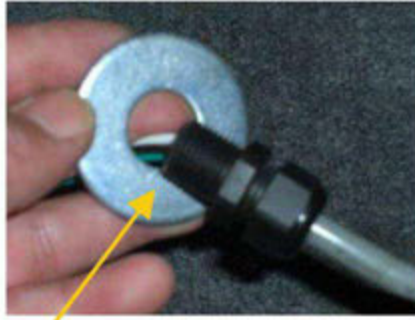
5. Unplug the potentiometer wires from the controller harness.



6. Slide out and remove the hand lever potentiometer.



7. Feed the foot pedal wires through the strain relief fitting.
NOTE: Feed the ground wire first.



8. Feed the foot pedal wires through the metal washer. This makes up the outside of the switch plate. Feed the wires through the switch plate into the body of the wheel. Feed the wires through the strain relief nut.



9. Make sure the washer is centered and flush with the switch plate on the outside.

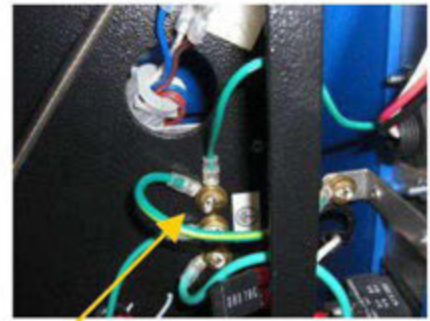


10. Tighten the strain relief nut from the inside. Use the 19 mm box wrench to secure.
NOTE: Do not the crimp nut on the strain relief fitting.

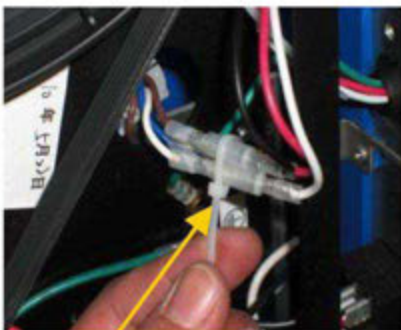


11. Reconnect the wires.

BROWN to **BLACK**
BLUE to **RED**
WHITE to **WHITE**



12. Unscrew the top ground wire on the body of the wheel. Add the ground wire from the foot pedal to the top ground wire. Screw both wires back down on the body, together.



13. Place a zip tie around the three wires to secure them.
NOTE: Make sure the wires are **NOT** touching the drive belt.



14. Secure the foot pedal cord to the power harness mounted at the bottom of the wheel using a zip tie.



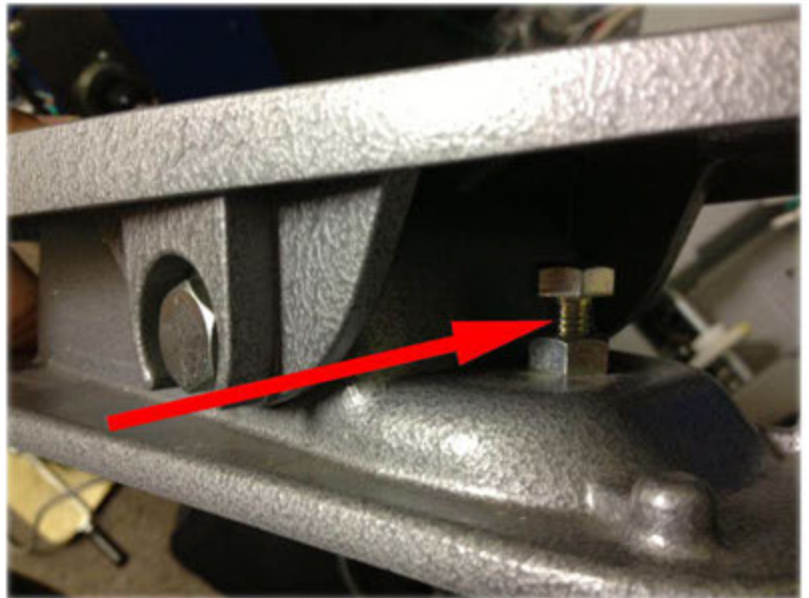
15. Tighten the crimp nut on the strain relief to secure the foot pedal cord.

You have now converted a speed lever Aspire to a foot pedal Aspire.

How To Adjust The Foot Pedal's Range of Motion

1. To increase the range of motion in the foot pedal, lower the set bolt. THEN reset your potentiometer to the new "stop" position.

2. To decrease the range of motion in the foot pedal, raise the set bolt. THEN reset your potentiometer to the new "stop" position.



How to Adjust the Foot Pedal Tension



Tool Required:
M-13 Wrench



Aspire Foot Pedal Assembly
Part# FRKA3002410

New Type Pedal



1. Use an M-13 wrench on the right side of the foot pedal.



2. Adjust the U-nut to change the tension of the foot pedal.



Caution

Do not try to unscrew the bolt on the left side (M17 bolt)

Resetting the Potentiometer



REQUIRED TOOLS

1. Allen Wrench - 5/32"
2. Phillips screw driver

Adjusting Potentiometer:



1. Unscrew the 4 feet using a Phillips screwdriver



2. Remove the plastic cover and make sure the foot pedal is in the STOP position. Turn the power on the wheel.



3. Loosen the two screws connecting the potentiometer bracket to the foot pedal housing.



4. Move the potentiometer (silver gear) away from the white plastic gear so they are not touching.



5. Turn the potentiometer until the wheel head starts to turn. Then turn it the opposite way until the wheel head stops.



6. When the wheel head stops, slide the potentiometer up against the white gear, then tighten the screws that mount the bracket to the foot pedal housing. Replace the plastic cover and the 4 screws. Your wheel should now run from 0/STOP to 250 rpm.

NIDEC-SHIMPO CORPORATION

175 Wall Street

Glendale Heights, IL 60139

Phone: 1-800-237-7079 Fax: 630-924-0340